



INTEGRABLE DOT PEEN

XF510r



GRAVOTECH
EXPRESSION OF THINGS



This online marking system delivers direct part marking on your parts while keeping noise to a minimum. Quiet enough to meet the noise controls in the strictest standards, it is the industrial solution for marking metal sheets.



SILENT MARKING

Scribing technology makes sense on hollow metal parts (tubes and pipes) or formed plates (chassis and body parts) which will naturally resonate during rotary marking. Scribing, by reducing the number of impacts, will allow a smooth and silent marking with high contrast, making it easier to proofread. Thanks to the Datamatrix kit, we offer you the possibility to switch to a dot peen machine when you need to mark a 2D code.

HIGH MARKING QUALITY

Designed to combine depth with aesthetic results: speed, strength, and position can be configured for perfect direct part marking consistency and legibility meaning a high possibility to survive at the painting process. This gives the highest quality characters with the existing fonts.

STRONG & DURABLE

Composed of high rigidity guide rails and high-performance styluses: high amplitude, anti-burrs, and a diamond tip. The power and precision of this DPM machine come from the quality of its construction, ensuring the user high performance, low maintenance, power, and air consumption.

SEE OUR VIDEO



KEY FEATURES

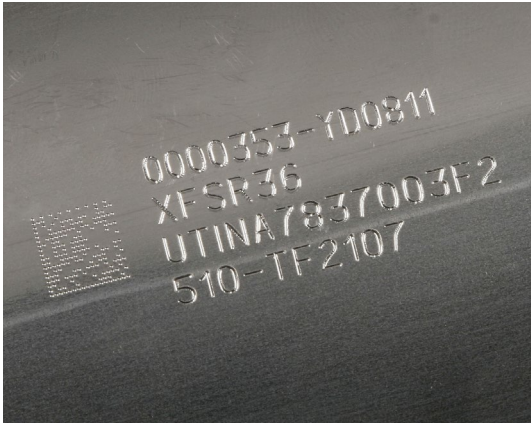


Dedicated XF510r Stylus

A range of stylus adapted to each application.

Different piston sizes to adapt to applications from thin nameplates to deep chassis marking.

Available in carbide and diamond points to adapt to different surfaces.



Datamatrix Kit

The XF510r range provides an unmatched marking speed, quality, and reliability both for low and high volume production.

With the optional Datamatrix kit, code and characters are perfectly marked in a single operation and in record time.

XCOM: perfect control of the marking head

XCOM controller pilots the entire range and considerably facilitate the use and management of your markings and improves the quality of all your markings.

XCOM control unit is the most communicative on the market: RS232 ports, USB, Ethernet TCP/IP, Profinet, Ethernet IP, EtherCAT, 8 input/4 output for easy integration into all production lines.



LEARN MORE ABOUT PRODUCT



CONTROLLER

XCOM



Simplified user experience

The XCOM controller looks like a tactile tablet (7 "/18 cm) and is just as easy to use. From its tactile screen, the operator can quickly set up, edit, program templates, and launch markings. No PC required.

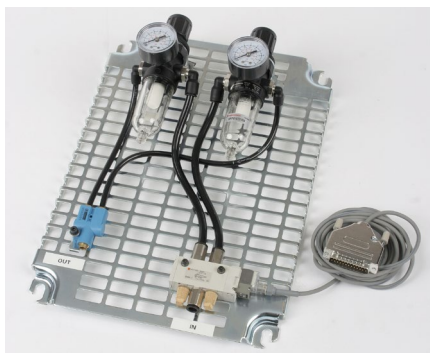
Hyperconnected XCOM

The ideal controller for industry 4.0. Just choose your preferred field bus (Profinet, Ethernet IP or EtherCAT) to integrate the XCOM to your process and enjoy a reduced commissioning time and full interoperability on your production line, whichever the PLC and devices used.

Empower your data

The data collection and storage feature in the XCOM simplifies the traceability of your products: generate history files, creates dashboards to monitor machines, track your productivity, and set up preventive maintenance. This controller is a powerful tool that will save time, money, and headaches!

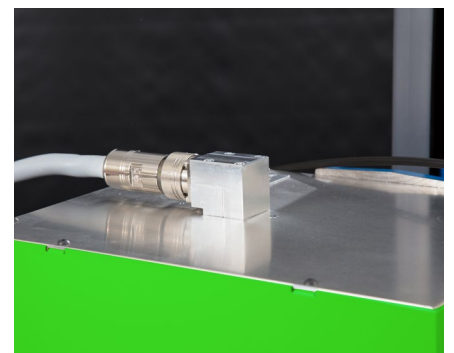
ACCESSORIES



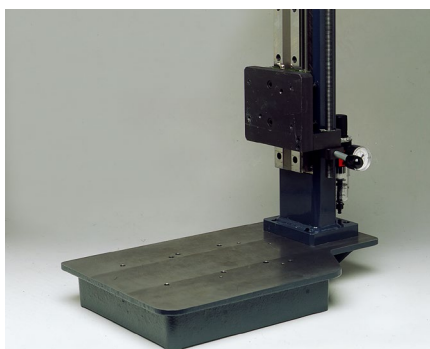
Datamatrix Kit



Head Adjustment Device



Adaptive connections



Column Mount

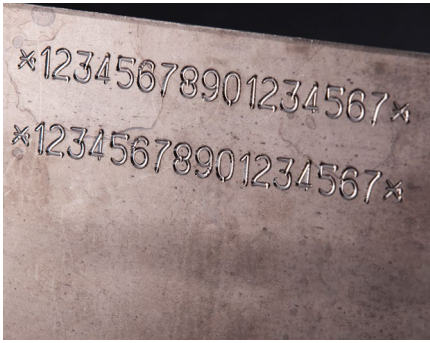


Process Control Box



Protective Covers

APPLICATIONS



Automotive marking



Cylinder marking



Marking tools for identification and equipment traceability



Aluminum marking



Stainless steel marking



Steel marking

SERVICE & SUPPORT



Training

Our training modules are designed to optimize your use of our solutions and are available for our full range of machines, software and accessories.



Technical support

We bring you local support in your language in more than 50 countries, where we have established presence directly and with our distribution partners.



Maintenance

Thanks to experience gathered with Gravograph and Technifor and our global presence in more than 50 countries with 150 Gravotech technicians and our distributor partners, we can offer you a wide range of services.

MAKE YOUR SAMPLES



TECHNICAL DATA

XF510r

Model	XF510Cr	XF510Sr	XF510Dr
Technology	Scribing		
Machine dimensions (L x W x H)	182 x 167 x 224 mm (7.2 x 6.6 x 8.8 in)	222 x 167 x 224 mm (8.7 x 6.6 x 8.8 in)	302 x 167 x 224 mm (8.7 x 6.6 x 8.8 in)
Machine weight	9kg (19.9 lbs)	10 kg (22 lbs)	11.5 kg (25.3 lbs)
Marking area (L x W)	40 x 50 mm (1.6 x 2 in)	80 x 50 mm (3.15 x 2 in)	160 x 50 mm (6.3 x 2 in)
2D codes	Datamatrix, QR Codes		
Communication Interfaces	RJ45, USB (x2), RS232, 8I/4O, Process IO		
Compressed air supply	1 - 8 bar		
Display	7" color touchscreen		
Embedded fonts	10		
Fieldbus (option)	Profinet, Ethernet IP		
Input voltage	100 - 240 V AC		
Languages available	19		
Operating temperature	5° to 45° (41 to 113 F)		
Rated power consumption	140 VA		
Safety Performance Level (option)	PL d		



Follow us:

