

GTD-30
MACHINE QUOTATION

GTD - 30 Geared-Head Engine Lathe

30" Swing Over Bed, 47" - 196" Between Centers

STANDARD GTD-30 SERIES LATHE FEATURES:

CONSTRUCTION:

- Meehanite Castings, fine grain and high-density cast iron using the superior Meehanite process provides superior vibration dampening and improved surface finish and tool life.
- Induction Hardened & Precision Ground oversized Bed Ways with Turcite-B coating
- Gap-Bed with 40-1/2" swing clearance for added workpiece capacity

HEADSTOCK:

- 15-HP spindle motor for efficient metal removal capability
- Hardened & ground A2-11 spindle and 4-1/8" spindle bore
- 3-Bearing spindle, 2x NSK 32030XJ tapered roller bearings, and 6026 rear ball bearing
- 12-speed geared-headstock with 23 – 1300 rpm spindle speeds
- Alloy Steel Hardened & Ground Headstock Gears
- Safety gated spindle control lever to protect from accidental engagement
- Footbrake provided for added safety and operational convenience

AXIS FEED DRIVE:

- Rapid feed advance for cross and longitudinal motion for enhanced operational efficiency
- Inch, metric, diametral & modular threading capability without the use of change gears
- A thread dial indicator is included with the machine for inch & metric thread cutting
- Dual Inch/Metric cross feed, compound, and longitudinal dials
- Safety overload clutch for feed shaft to protect gearing from overloads
- Lead screw Safety Torque Limiting device as well as a shear pin for lead screw
- The automatic feed mechanism is mechanically interlocked with the thread cutting engagement lever to prevent damage though simultaneous engagement.
- The fourth rod controls a 4-position automatic feed stop which disengages the longitudinal feed motion at 4-distinct adjustable pre-determined positions.

MACHINE FEATURES:

- Automatic way lubrication with filtered pressure lubrication system.
- The electrical control box and coolant system are equipped with electro-magnetic contactors and overload relay protection devices to prevent motors from burning out and to ensure safe operation.
- The tailstock features 2-speed quill advance and is oversized and equipped with a tang-drive and a drift-slot to make removing the centers and taper shank drills very easy without damage to the quill.
- The compound slide features a 4-point bolt-down for extra cutting stability.
- The cross-slide lead screw is double-anchored for heavy duty turning applications
- Flood coolant system is included
- A rear A2-11 chuck mount for 16" chuck is an available option
- A tool box and tool kit with grease gun and touch-up paint is included with the machine
- Inspection Report on accuracy to CNS 94 and B7001 standards included
- Instruction Manual, Tools and Tool Box with hand tools and lube gun included
- One-Year Limited Parts and Labor Warranty Included
- Large compliment of parts and accessories in stock in USA to ensure continued operation

The Ganesh machines are built in our ISO-9002 certified factory in Taiwan.

GTD-30 MACHINE-SERIES SPECIFICATIONS

Capacity & Dimensions-

Swing over Bed	29.92"	760 mm
Swing over Cross Slide	19.69"	500 mm
Swing thru Gap	40.55"	1,030 mm
Width of Gap (measured from spindle nose)	12"	305 mm
Bed width	16.54"	420 mm

Spindle-

Spindle Motor Horsepower	15-HP	11.5 kw
--------------------------	-------	---------

Spindle speeds – 12-speeds with 23 – 1300 rpm
High & Low Speed Range

High	370	730	1300	145	285	510
Low	60	115	210	23	45	82

Spindle Bore	4-1/8"	105 mm
Spindle Nose	A2-11	A2-11
Spindle taper in spindle nose	MT-7	MT-7
Spindle taper reduction sleeve provided	MT-5	MT-5
Spindle weight capacity (Chuck only)	1,100 lbs.	500 kgs
Spindle weight capacity (Chuck and Tailstock)	2,200 lbs.	1,000 kgs
Spindle weight capacity (Chuck, Steady Rest and Tailstock)	4,400 lbs.	2,000 kgs

Carriage –

Cross slide travel	15.75"	400 mm
Carriage width	26.38"	670 mm

Compound-

Four T-nut lock-bolts on compound cross-slide base for added rigidity

Compound Rest Travel	9.45"	240 mm
Cutting tool height maximum	1.0"	25 mm

Tailstock- (Quick 2-speed quill advance)

Engraved with inch / metric quill graduations

Quill diameter	3.15"	80 mm
Quill stroke	7.87"	200 mm
Quill taper	MT-5	Morse Taper # 5
Quill tang drive and drift-slot for tailstock	included	included
Tailstock body set-over adjustment	± 1/2"	(± 13 mm)

Thread Cutting-

Lead screw diameter & pitch	1.77" x 2 T.P.I.
Thread cutting range – 36 inch pitches	2 – 28 TPI
Thread cutting range – 65 metric pitches	0.8 – 14 mm
Thread cutting range – 36 diametric pitches	4 – 56 D.P.
Thread cutting range – 22 module pitches	0.5 – 7 M.P.

Feeds-

(with clutched feed shaft for safety)

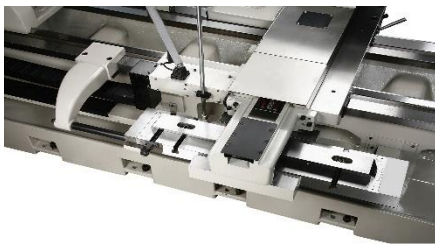
Feeds – longitudinal	0.0019" - 0.027"/rev.	0.05 - .7 mm/rev.
Feeds – cross	0.00098" - 0.0137" in/rev	0.025 - 0.35 mm/rev.
Feed shaft stop control	4-adjustable automatic feed stops to disengage the longitudinal feed	
Feed Rod Diameter	1.26"	32 mm

Electrical Requirements-

Connected load - 12 kw	10 kva, 220 vac, 42 amps, (440 vac optional)	
Rapid traverse motor	1/4-HP	0.1875 kw
Coolant motor / Coolant tank capacity	1/8-HP / 11-gallons	40 liters

GTD-30 Geared-Head Engine Lathe

FREE PRODUCTIVITY PACKAGE INCLUDED WITH EACH MACHINE: \$12,000 VALUE

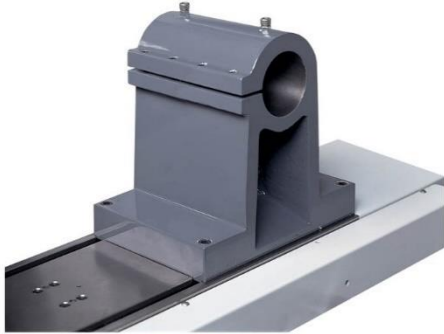


Longitudinal & Cross Rapid Feeds
4-Position Longitudinal Feed Stop
11.5" Steady Rest (Capacity: 20-260mm) (Roller Bearing Style Optional)
Tailstock with 2-Speed Quill Advance
Coolant System
Dead Center and Foot brake
Chuck Guard with Interlock
Spindle Taper MT-5 Reduction Sleeve
Full Length Back Splashguard
Machine Leveling Pads & Tools
4-Way Toolpost
Halogen Work Light (55 Watts)

GTD-3047 Heavy Duty 30" X 47" Engine Lathe 47" between centers, 102" bed length, LxWxH – 102"x49"x57", G.W. 6,945 pounds	\$49,990.00
GTD-3067 Heavy Duty 30" X 67" Engine Lathe 67" between centers, 122" bed length, LxWxH – 122"x49"x57", G.W. 7,495 pounds	\$59,990.00
GTD-3087 Heavy Duty 30" X 87" Engine Lathe 87" between centers, 142" bed length, LxWxH – 142"x49"x57", G.W. 8,050 pounds	\$69,990.00
GTD-30126 Heavy Duty 30" X 126" Engine Lathe 126" between centers, 181" bed length, LxWxH – 181"x49"x57", G.W. 9,150 pounds	\$79,990.00
GTD-30165 Heavy Duty 30" X 165" Engine Lathe 165" between centers, 221" bed length, LxWxH – 221"x49"x57", G.W. 10,250 pounds	\$89,990.00
GTD-30196 Heavy Duty 30" X 196" Engine Lathe 196" between centers, 261" bed length, LxWxH – 261"x49"x57", G.W. 11,150 pounds	\$99,990.00

Machine Options

Wiring of machine for 440 volt input voltage (Net Price)	\$495.00
Taper Attachment with 18 inch travel (450 mm)	\$3,995.00
Upgrade to 33" swing	\$7,500.00
3 inch bar holder	\$3,990.00



Workholding Options

Upgrade 11.5" Standard Steady Rest with Roller Bearings	\$1,695.00
15.5" Steady Rest (capacity 50-320 mm)	\$2,695.00
20" Steady Rest (capacity 270-490 mm)	\$4,495.00
Follow Rest (grip range 30-100 mm)	\$495.00
Live Center, MT-5	\$1,185.00

Tool Holder Options

Drill Chuck and MT-5 Arbor, 3/4" capacity	\$495.00
DORIAN Quick-Change Wedge-Type DA size 4" wide toolpost & 4-toolholders: 2 ea. Turning/Facing toolholder, 2 ea. Boring/Turning/Facing toolholder	\$2,395.00



Chuck Options

Contact us for other work holding requirements.
No chuck comes with the machine as standard equipment due to the diversity of needs!

Digital Readout Options Match DRO length to lathe bed-length being purchased.

2-Axis 48" Newall	Premium DRO's - installed	P.O.R.
2-Axis 68" Newall	Premium DRO's - installed	P.O.R.
2-Axis 88" Newall	Premium DRO's - installed	P.O.R.
2-Axis 126" Newall	Premium DRO's - installed	P.O.R.
2-Axis 165" Newall	Premium DRO's - installed	P.O.R.

3-Axis readouts and additional models are available by request.



**FAGOR INNOVA
DIGITAL READOUT
WITH LCD SCREEN**

- *High Resolution TFT Display*
- *Solid Graphics with Sectional Views*
- *Conversational Graphic Help Screens*
- *3-D turning simulation, Taper calculation, Axis coupling (Turning)*
- *Customizable for Turning, Grinding etc.*
- *50-work offsets, Multiple Tool offsets (16 sets)*
- *Built-In calculator with auto recall*
- *Part centering, Part alignment, Angle calculation in the plane*
- *USB port for easy communication and software updates*

Terms of Sale

Warranty – 1 full year parts warranty on the machine. Labor warranty will be provided by your local servicing distributor.

Parts– Spare parts are available from our facility in Chatsworth to support your continued machine operation.

F.O.B. Point – Machines ship F.O.B. from Chatsworth, CA 91311.

Payment Terms – 30% down payment with your Purchase Order secures the machine. 60% is due prior to machine shipment, and the 10% balance is due net-30 days after installation or the machine can be financed with our approved lender. Leases with \$1.00 buyout are available upon approved credit.

Purchase is governed by the Expand Machinery terms and conditions of sale.

UL & TÜV ELECTRICAL APPROVAL IS AN AVAILABLE OPTION

Prices and specifications subject to change without prior notice.